



# AnaLisse Dress

©2016 by Judy Lamb

Difficulty Level: Advanced

Size: To fit a 34-36-inch bust. (Finished bust measurement: 39 inches) For smaller size go down one needle size, and for larger size go up one needle size; follow directions as given.

Materials: Size 8 circular knitting needles; double pointed needles, sizes 7 and 8; Paton's Classic Wool, 9 skeins MC, and 1 skein contrast; cable needle, stitch markers.

Gauge: 5 sts/inch and 5 ½ rows/inch in stockinette on size 8 needles.

## Abbreviations:

FC (front cross): sl 3 sts to cable needle and hold in front, k3, then k3 from cable needle.

BC (back cross): sl 3 sts to cable needle and hold in back, k3, then k3 from cable needle.

BPC (back purl cross): sl 2 sts to cable needle and hold in back, k3, then p2 from cable needle.

FPC (front purl cross): sl 3 sts to cable needle and hold in front, p2, then k3 from cable needle.

## Lacing Cable:

Row 1: k3, p6, k6, p6, k3.

Row 2: k3, p6, BC, p6, k3.

Row 3: rep row 1.

Row 4: k3, p4, BPC, FPC, p4, k3.

Row 5: k3, p4, k3, p4, k3, p4, k3.

Row 6: FPC, BPC, p4, FPC, BPC.

Row 7: p2, k6, p8, k6, p2.

Row 8: p2, FC, p8, FC, p2.

Row 9-13: p2, k6, p8, k6, p2.

Row 14: p2, FC, p8, FC, p2.

Row 15: p2, k6, p8, k6, p2.

Row 16: BPC, FPC, p4, BPC, FPC  
 Row 17: rep row 5.  
 Row 18: k3, p4, FPC, BPC, p4, k3.  
 Repeat rows 1-18 for pattern.

**Directions:**

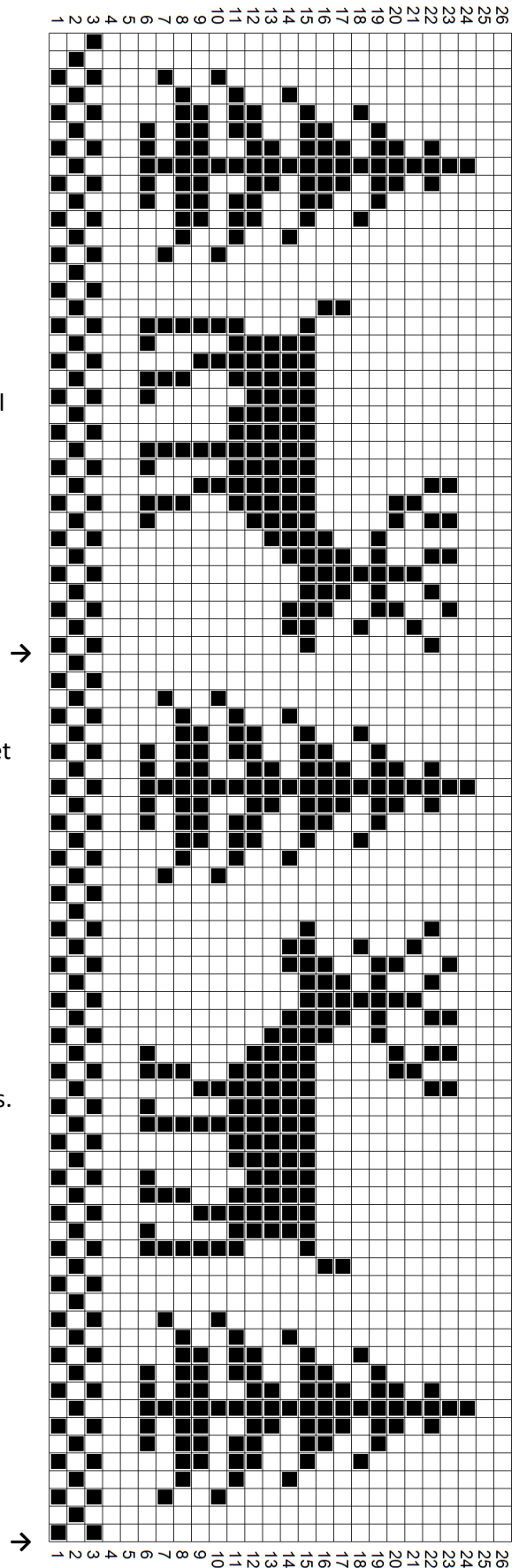
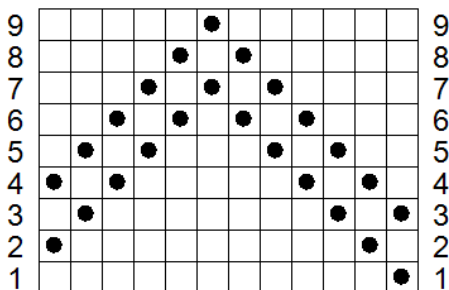
With size 8 circular needle and MC, cast on 206 sts.  
 Knit 6 rounds.  
 Round 7: (Knit 85, sts, place a marker, inc 6 sts evenly over next 18 sts, place a marker) two times. Note: when placing markers, it is a good idea to use a different color or type of marker for the final marker, as this marker will designate the ends of the rounds.)  
 From this point on, for the entire length of the skirt, the Lacing Cable will be worked on the two sets of 24 sts (following the pattern above, which is given in rows instead of rounds for ease of distinction). On each set of 85 sts, the following pattern is followed:

Knit 5 rounds.  
 Purl 1 round.

Now, work 26 rounds of Reindeer/Tree graph on each set of 85 sts, while continuing to work Lacing cable on each set of 24 sts. (Note: CC yarn must be cut after each row of graph on 85 sts, as stranding it across the cable does not work).

When graph is complete, work 1 purl round on each set of 85 sts. Then knit 1 round, and then purl one more round on those same sts. (The cable is worked all the way to the armholes.)

Work Chevron Graph on next 9 rows of each set of 85 sts. (There will be one st left over at the end, which will be worked as the first st of the graph).



Each set of 85 sts is now worked in stockinette stitch until skirt measures 20 inches from beginning.

#### Waist Shaping and Staggered ribbing:

Place a marker 7 sts in from each side on each 85-st section. (these mark the 7 sts that will be decreased for the waist shaping.)

Begin waist shaping by decreasing one stitch each side of each 85-st section every 5 rows six times. AT THE SAME TIME, begin staggered ribbing (ribbing is worked between the 'new' markers):

Row 1: k2, (p3, k13) four times, p3, k2.

Row 2: k2, (p1, k1-b, p1, k13) four times, p1, k1-b, p1, k2.

Rows 3, 4, 5, 6, 7: rep row 2.

Row 8: k2, p1, (k1-b, p3, k9, p3) four times, k1-b, p1, k2.

Row 9: k2, p1, (k1-b, p1, k1-b, p1, k9, p1, k1-b, p1) four times, k1-b, p1, k2.

Rows 10, 11, 12, 13, 14: rep row 9.

Row 15: k2, p1, (k1-b, p1, k1-b, p3, k5, p1, k1-b, p1,) four times, k1-b, p1, k2.

Row 16: k2, p1, (k1-b, p1, k1-b, p1, k1-b, p1, k5, p1, k1-b, p1, k1-b, p1,) four times, k1-b, p1, k2.

Rows 17, 18, 19, 20, 21: rep row 16.

Row 22: k2, p1, (k1-b, p1, k1-b, p1, k1-b, p7, k1-b, p1, k1-b, p1,) four times, k1-b, p1, k2.

Row 23: k2, p1, (k1-b, p1, k1-b, p1, k1-b, p1, k1-b, p3, k1-b, p1, k1-b, p1, k1-b, p1) four times, k1-b, p1, k2.

Rows 24, 25, 26, 27, 28: rep row 23.

Row 29: k2, (p1, k1-b) across to last 3 sts, p1, k2.

Work in ribbing as set for 3 more inches.

#### Increase for bust and taper off ribbing:

Row 1, 2, 3, 4: M1, k2, p1, (k1-b, p1, k1-b, p1, k1-b, p1, k1-b, p3, k1-b, p1, k1-b, p1, k1-b, p1) four times, k1-b, p1, k2, M1.

Row 5: k3, p1, (k1-b, p1, k1-b, p1, k1-b, p1, p7, p1, k1-b, p1, k1-b, p1) four times, k1-b, p1, k3.

Rows 6, 7, 8, 9: M1, k3, p1, (k1-b, p1, k1-b, p1, k1-b, p1, k5, p1, k1-b, p1, k1-b, p1) four times, k1-b, p1, k3, M1.

Row 10: k3, p1, (k1-b, p1, k1-b, p2, k7, p2, k1-b, p1,) four times, k1-b, p1, k3

Rows 11, 12, 13, 14: M1, k3, p1, (k1-b, p1, k1-b, p1, k9, p1, k1-b, p1) four times, k1-b, p1, k3, M1.

Row 15: k4, p1, (k1-b, p2, k11, p2) four times, k1-b, p1, k4

Rows 16, 17, 18, 19: M1, k4, p1, (k1-b, p1, k13, p1) four times, k1-b, p1, k4, M1.

Row 20: k6, (p1, k13) four times, p1, k6.

There are now 85 sts again. Remove extra markers, and work front and back panels in stockinette stitch and Lacing Cable as set until dress measures 34 inches from beginning.

On next row, work pattern as set decreasing across cables as follows:

(patt 2, k2 tog) twice, (k2 tog, patt 1) twice, k2 tog, (k2 tog, patt2) twice. (there are now 17 sts on cable panel).

#### Begin Armhole Shaping:

On next round, bind off center 9 sts on each cable panel. Front and Back will now be separate, and you will now be working in rows. Remove markers, and work all sts in st st to begin armhole shaping.

#### Dress Back:

Purl 1 row.

Bind off 3 sts at beg of next two rows.

Dec 1 st at each end of next row.

Knit 1 row.

Dec 1 st at each end of next row.

Knit 1 row.

Dec 1 st at each end of next row, also beginning and centering Reindeer/Tree Graph (only the area marked between the arrows) on this row. (There should be 13 sts on RH needle before starting graph sts)

Continue working in graph, and dec each end of next 2 following right side rows.

When graph is complete, knit 4 rows, then work even until armhole measures 8 inches.

Shape shoulders by binding off 10 sts at armhole edge 2 times.

### **Dress Front:**

Purl 1 row.

Bind off 3 sts at beg of next two rows.

Dec 1 st at each end of next row.

Knit 1 row.

Dec 1 st at each end of next row.

Knit 1 row.

Dec 1 st at each end of next row, also beginning and centering Reindeer/Tree Graph (only the area marked between the arrows) on this row. (There should be 13 sts on RH needle before starting graph sts)

Continue working in graph, and dec each end of next 2 following right side rows.

When graph is complete, knit 2 rows.

### **Neck Shaping:**

Work across 28 sts, bind off center 17 sts, then work rem 28 sts.

Working each side separately, bind off 3 sts at neck edge. Work 1 row even.

Bind off 2 sts at neck edge.

Dec 1 st at neck edge every RS row 3 times. (20 sts remain)

Work even until armhole measures 8 inches.

Shape shoulders by binding off 10 sts at armhole edge 2 times.

### **Neckband:**

With size 7 dpns, pick up 17 sts down Left neck edge, 18 sts across bound off sts of front neck, 17 sts up right neck edge, and 31 sts across back neck, dividing sts evenly among needles. (83 sts)

With right side facing, purl one round.

Work color pattern from first two rows of Reindeer Graph.

With MC, knit 1 round.

Purl 1 round, dec 1 stitch mid back.

Work in (k1-b, p1) ribbing for 6 rounds.

Bind off using Invisible Sewn Bind off.

### **Sleeves (make 2):**

With size 8 dpns, and starting at center of armhole bind off, pick up 5 sts at underarm, then 25 sts between underarm and shoulder, 25 more between shoulder and underarm, and then 5 more at underarm.

Mark 14 sts centered at shoulder.

Knit to first of marked sts, and knit into the front and back of each of 14 sts. Wrap next st and turn.

Purl 28 sts; wrap and turn.

(knit into the front and back of next st, k1) over 28 sts, pick up and knit wrapped st, k1, wrap next st and turn.

Purl to wrapped st, pick up and purl wrapped st, p1, wrap next st and turn.

Work to wrapped st, pick up and work wrapped st, wrap next st and turn.

Repeat this row until there are 10 sts left unworked at underarm

(Work to wrapped st, pick up wrap and work wrapped st, work next st, wrap next and turn) 2 times.

(Work to wrapped st, pick up wrap and work wrapped st, work next 2 sts, wrap next and turn) 2 times.

All sts should be worked at this point. (88 sts)

Place marker at center of underarm.

Now, working in the round, work 3 rounds even in st st.

Dec 1 st each side of marker (ssk before marker, and k2 tog after marker) every 3 rows 11 times, and then every 4 rows 10 times.

AT THE SAME TIME, begin cable on center 24 sts of sleeve on second decrease round.

Work even until sleeve measures 14 ½ inches.

Dec 5 sts evenly across cable.

Work (k1-b, p1) ribbing for 3 inches.

Bind off using Invisible Sewn Bind Off.

©2016 by Judy Lamb