

Lace Accented Fair Isle Vest

Difficulty Level: Intermediate

★★★★☆

Size: Women's Small, (Medium, Large, XLrg)

Finished Chest Measurement: 36 (38, 42, 44) inches

Materials: Red Heart Super Saver Yarn: 2 skeins Main Color (MC) and 1 skein Contrast Color (CC); Knitting needles, size 7(U.S.); 17-inch circular knitting needle, size 7(U.S.); stitch holders, yarn needle for sewing.

Gauge: 5 sts and 6.5 rows per inch in stockinette stitch

Instructions:

Bottom Edging (make TWO):

With CC, cast on 13 sts.

Row 1: sl 1, k1, yo, k2tog, k5, yo, k2tog, yo, k2.

Row 2 and all even numbered rows: yo, k2tog, knit to end.

Row 3: sl 1, k1, yo, k2tog, k4, (yo, k2tog) twice, yo, k2.

Row 5: sl 1, k1, yo, k2tog, k3, (yo, k2tog) 3 times, yo, k2.

Row 7: sl 1, k1, yo, k2tog, k2, (yo, k2tog) 4 times, yo, k2.

Row 9: sl 1, k1, yo, k2tog, k1, (yo, k2tog) 5 times, yo, k2.

Row 11: sl 1, k1, yo, k2tog, k1, k2tog, (yo, k2tog) 5 times, k1.

Row 13: sl 1, k1, yo, k2tog, k2, k2tog, (yo, k2tog) 4 times, k1.

Row 15: sl 1, k1, yo, k2tog, k3, k2tog, (yo, k2tog) 3 times, k1.

Row 17: sl 1, k1, yo, k2tog, k4, k2tog, (yo, k2tog) 2 times, k1.

Row 19: sl 1, k1, yo, k2tog, k5, k2tog, yo, k2tog, k1.

Row 20: yo, k2tog, k11.

Repeat rows 1-20 6(7,7,8) more times [7(8,8,9) repeats total]. Bind off.

FRONT:

*With MC, pick up 91(95,105,111) sts along long straight edge of one bottom edging piece.

Knit 1 row.

Beginning with a knit row, work stockinette stitch until piece measures 13 (13, 14, 15) inches.



Work rows 1-39 of Fair Isle Graph (centering pattern on sts). *

When graph is completed, work 3(1,1,1) row(s) stockinette with MC.

Shape Neck:

Work across 31(32,35,36) sts, turn. Leave rem sts on needle unworked.

Dec 1 st at neck edge on next 2 rows.

Dec 1 st at neck edge on next 2(3,3,3) right side rows.

Work even until piece measures 9 inches from beginning of colorwork.

End by working a right side row.

Shoulder Shaping (done with short rows):

Purl 9(9,10,11), wrap next stitch and turn; knit 9(9,10,11); purl 9(9,10,10), pick up and purl wrap, purl next 8(8,9,9) sts, wrap next st and turn; knit 18(18,20,21), purl to end, picking up wrap as you come to it.

Bind off knitwise. Cut yarn.

Place next 29(31,35,39) sts on a stitch holder. Attach yarn and knit to end.

Dec 1 st at neck edge of next two rows.

Dec 2 st at neck edge of next two right side rows.

Work even until piece measures 1 row less than 9 inches from beginning of colorwork, ending by working a wrong side row.

Knit 9(9,10,11), wrap next stitch and turn; purl 9(9,10,11); knit 9, pick up and knit wrap, knit next 8(8,8,9) sts, wrap next st and turn; purl 18(18,20,21), knit to end, picking up wrap as you come to it.

Purl one row.

Bind off knitwise. Cut yarn.

Back:

Work as for Front from * to *.

Work 8(6,6,6) rows stockinette stitch in MC.

Work across 29(30,33,34) sts, turn.

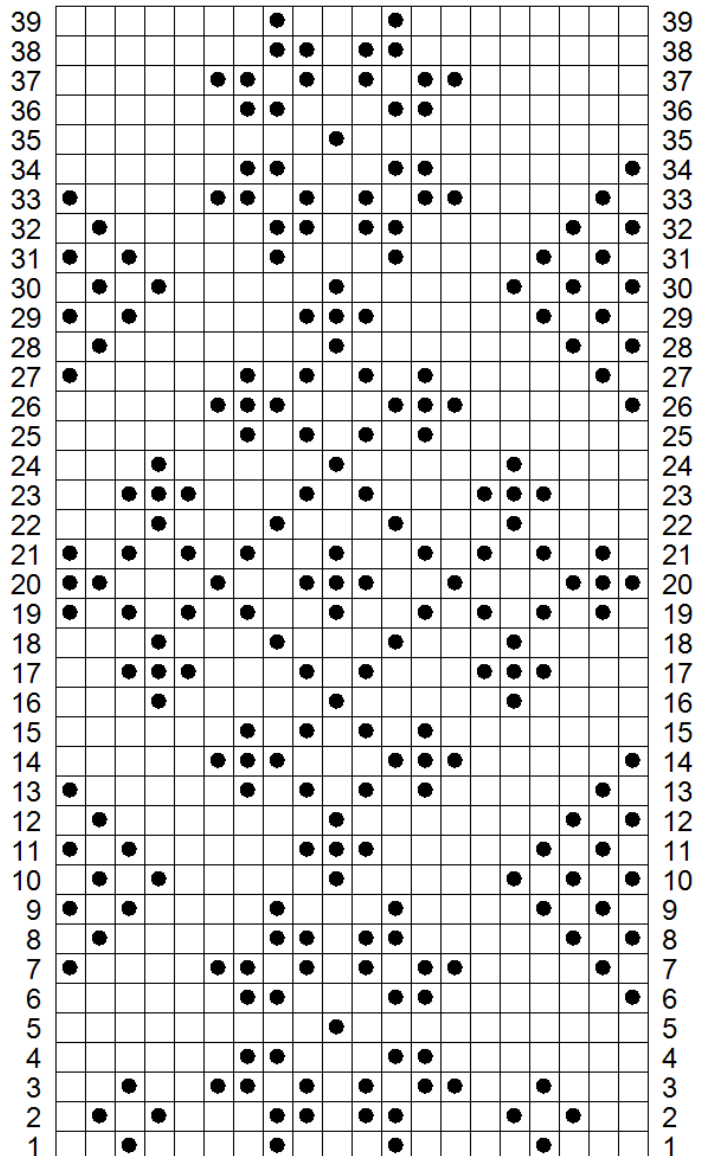
Dec 1 st at neck edge of next 2(3,3,3) rows.

Shape shoulders same as for Front.

Place next 33(35,39,43) sts on a stitch holder, and knit remaining sts.

Dec 1 st at neck edge of next 2(3,3,3) rows.

Shape shoulders same as for Front.



Sew shoulder seams.

Sew side seams up to beginning of colorwork.

Sleeve Edging:

With CC, cast on 4 sts.

Row 1: k2, yo, k2.

Row 2,4,6: knit to yo, knit yo through back loop, k to end.

Row 3: k2, yo, k3.

Row 5: k2, yo, k4.

Row 7: k2, yo, k5.

Row 8: Bind off 4 sts, knit yo through back loop, k to end.

Repeat rows 1-8 12 more times (13 repeats total).

Sew edging together, and place seam at underarm of vest. Sew edging to armhole, stretching gently to fit.

Neckband:

With CC, and starting on back piece just to the left of the sts on the stitch holder, pick up 6(8,8,9) sts up Left Back neck edge, 10(12, 12,14) sts down Left Front Neck Edge, knit across sts on Front holder, pick up 10(12, 12, 14) sts up Right Front neck edge, 6(8,8,9) sts, down Right Back neck edge, then knit sts across Back stitch holder.

Work I-Cord Bind off:

Cast on three sts using the knitted cast on.

(k2, ssk ; slip 3 sts back to LH needle) across until all sts have been worked. There will be 3 sts remaining on needle. Graft these three sts to the first 3 sts of I-cord.

See video on how to graft beginning and end of I-cord: <https://www.youtube.com/watch?v=gQLa-vjWQ-I&index=3&list=LLQbVoferx4yeGVskhG0FaoA&t=0s>